

OPENING SUMMER 2012
RESIDENCIES FOR SCHOLARS, ARTISTS AND PRACTITIONERS



Zentrum für Kunst und Urbanistik (ZKU) Berlin

Center for Art and Urbanistics Berlin

2011-11-16



ZK/U

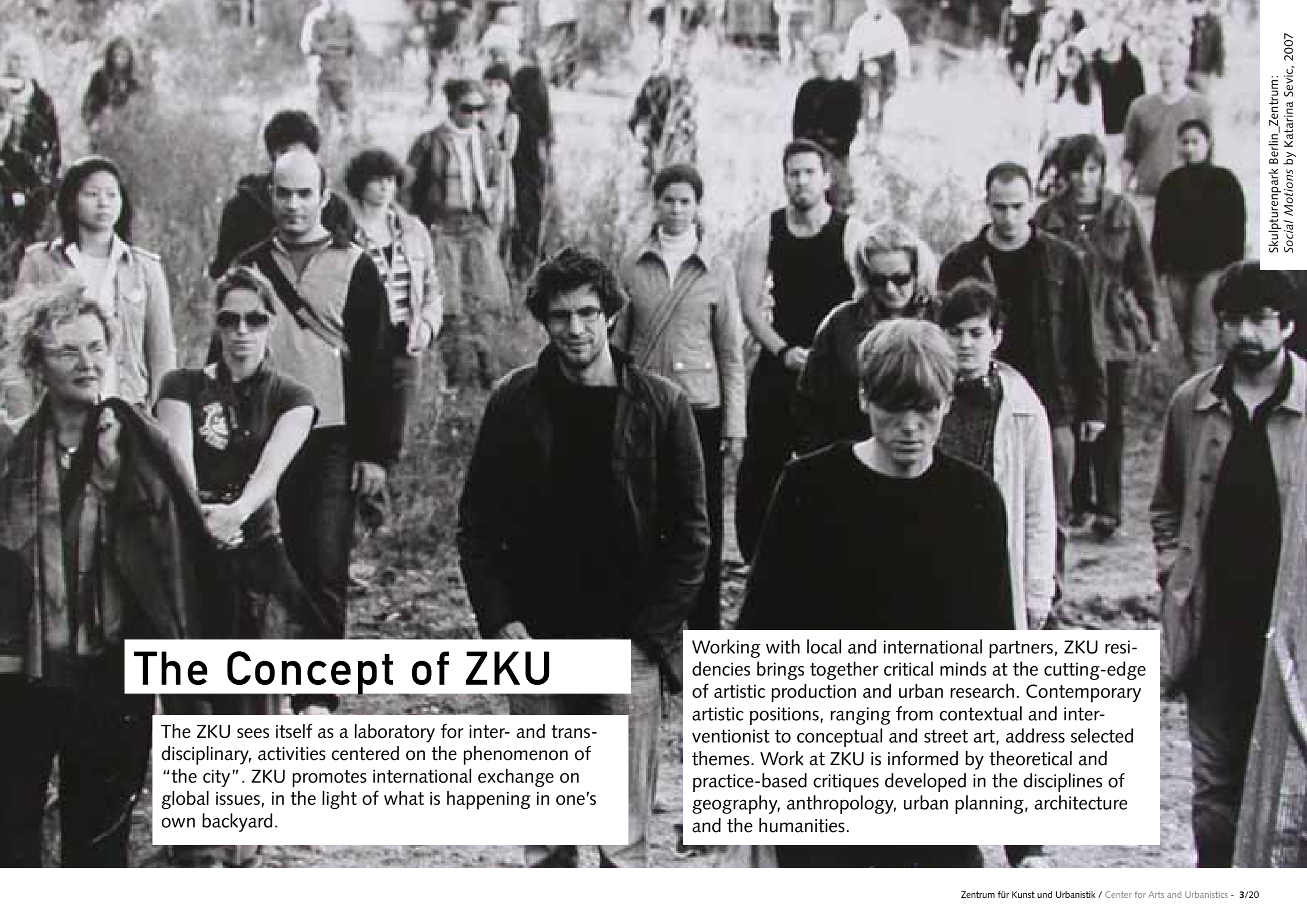
Zentrum für Kunst und Urbanistik (ZKU) Berlin

Center for Art and Urbanistics (ZKU) in a renovated Railway Depot in Berlin

A new, innovative venue, offering artistic and research residencies of 3–12 months duration for artistic practice at the interface of urban research, will open its doors in Moabit, Berlin-Mitte, on the edges of Berlin's largest inland port, Westhafen, in June 2012.

Located in a former railway depot surrounded by a freshly landscaped park, ZKU – the Center for Art and

Urbanistics - is the cornerstone of a concept developed by the Berlin-based artists' collective KUNSTrePUBLIK. Analogous to the nineteenth-century transport of goods by rail, this unique new venue is set to become a lively hub for the transport of ideas and ideals in the postindustrial era.



The Concept of ZKU

The ZKU sees itself as a laboratory for inter- and trans-disciplinary, activities centered on the phenomenon of "the city". ZKU promotes international exchange on global issues, in the light of what is happening in one's own backyard.

Working with local and international partners, ZKU residencies brings together critical minds at the cutting-edge of artistic production and urban research. Contemporary artistic positions, ranging from contextual and interventionist to conceptual and street art, address selected themes. Work at ZKU is informed by theoretical and practice-based critiques developed in the disciplines of geography, anthropology, urban planning, architecture and the humanities.



The Practice of ZKU

In support of 3-12 month artistic and research residencies, ZKU, with the support of its partners, provides “living & work” spaces for international and local applicants. ZKU also maintains a Common Room, conceived as an adjacent public space for use on a project basis by residency program participants, as well as by local or visiting groups and initiatives for production, exhibitions, lectures, workshops, performance and presentations.

In addition to this physical framework, ZKU maintains a theoretical superstructure —consisting of regular conferences, publicly accessible (online and print) publications and archives, etc.— emerging from, and feeding into, the expertise of participants and associates. These combined activities underpin ZKU's commitment to an interdisciplinary approach to art production, urban discourse, and creative, inclusionary and publicly-engaged practices.

Artists and fellows are selected on merit and according to how their proposals further develop ZKU's thematic focuses.

The Issues of ZKU

Whether shrinking or exploding in size, cities top the agenda in the twenty-first century. Demographics are polarizing fast, in all kinds of ways. Less than half the planet's 6.7 billion inhabitants live in cities now, but almost all the 2 billion births forecast for the next two decades will be urban births. Western industrial nations are growing gray and childless. Threshold countries are riding an economic high. Energy, services, and goods are increasingly in demand. Yet resources are running low.

Social disparities are growing and violent disputes are increasingly common. Security services are a fast-growing industry.

The ZKU's primary concern in the face of such developments is to promote, in cooperation with other artists and researchers, joint thinking about what is increasingly portrayed today as personal dilemmas. When dealing with issues such as migration and integration, marginalization, interim use and gentrification, economics and ecology it requires the united insights and vision of a broad range of partners. The ZKU provides a platform for partners committed to critical thought, experimentation and collaborative action.

ZKU Residencies: Selection Process

The non-profit organization KUNSTrePUBLIK originated from an artist initiative and is now responsible for the ZKU concept, premises and programming. With an Artistic Advisory Committee comprised of artists, curators, researchers and representatives from partner organizations, KUNSTrePUBLIK discusses the short-term objectives of ZKU and its residency program. In addition to the international residency program, ZKU provides studio space for local cultural institutions and art initiatives on a short-term basis to establish links

between international participants and local players above and beyond the encounters fostered by ZKU's main programming. Artistic and research residential fellows at ZKU typically work for a specific period of time – between three to twelve months – pursuing projects related to ongoing or short-term themes announced by KUNSTrePUBLIK and the Committee. ZKU residential fellows are selected on a case by case basis. Both the partner institutions and the Committee help identify the right participants for upcoming themes and programs.



Who can apply. How to apply.

Artists, scholars and practitioners can apply for a residency at ZKU. Their practice and research should relate to one of the topical themes provided by ZKU. Both major themes that change biannually and ongoing long-term topics will be announced on the ZKU website.

There are two different ways of applying to become a ZKU fellow: through the 'Open Call' and through our partner organisations.

The Open Call is periodically renewed and allows interested artists, scholars or practitioners to approach ZKU directly with proposals and ideas.

Artists should be working professionally in their fields, with a broad range of projects and exhibition experience. Scholars are expected to have attained a level equivalent to a master's degree, and preferably to have some years of professional experience. Practitioners should have a broad range of professional experience in their fields.

After being selected, ZKU will support the invited residential fellow in their efforts to secure funding through external grants by providing the fellow with an official invitation and identifying relevant funding networks and grants. Once the funding has been secured, the ZKU team will schedule the residency with the new fellow. ZKU also works with a broad range of partner organizations to help secure funding for residential fellows. Partner institutions will either directly fund fellows or help secure funding. Application details are published on the ZKU website.



What the ZKU offers: Individual Support. Space. Collaborative and Network Possibilities.

In addition to studio work, the main focus of the ZKU residency program are the exchanges between artists, scholars and practitioners, as well as the outcomes of their individual and collaborative work that may include projects, symposia and exhibitions according to topic themes. We expect that these exchanges at the international and local levels will foster both short and long-term ties.

For this purpose, ZKU will offer fellows optimal working and communication structures.

Various spaces will be available for production, exhibiting, exchange and leisure, including:

- individual studio apartments (33-110 sqm)
- the communal kitchen for the residence
- a common room (600 sqm)
- the roofed terrace as outdoor working area (600 sqm)
- the conference room
- a growing archive (the library)
- the basement as additional workshop area
- the surrounding park with its community gardens
- local municipal workshops in the immediate neighbourhood for specialized productions.



Context. Content.

In addition to its various spaces and infrastructure, ZKU seeks to develop projects, co-produce knowledge and share values created through exchanges. ZKU does not offer a fixed set of ideas and principles for its fellows. Rather, individual projects and needs shape what could be described as a continuous formation. Instead of letting the 'final product' constrain the possible routes that a practice might take, ZKU focuses on the processes that come from, and feed into, the particular contexts of the fellows' practice, whether they be locally-defined situations or international discourses..

ZKU aims at providing the participants with access to resources that will enable them to develop and challenge their ideas and working methods during the period of their residency.

Fellows will be encouraged to present their work and ideas at the beginning (e.g. a semi-public 'Jour Fixe') and towards the end of their stay, allowing a chosen audience to share their thoughts. Presentations can be made individually or as part of a symposium or exhibition taking place in and around ZKU, and use a range of formats.

Researchers and artists will also have the chance to publish their work in a regular journal and to discuss their ideas with other professionals from the ZKU network during individual studio visits, informal meetings and open discussions. Parallel to individual activities ZKU will encourage involvement in external exhibition projects initiated by ZKU and their partners. The team of ZKU will keep the residents updated on events happening in the city and will support them in understanding the milieu that they are working and living in.

Partners

ZKU partners help establish our work on a broad, interdisciplinary, and heterogeneous footing. In the international context, ZKU endeavours to cooperate with established institutions.

Partners (Arts)

Arts Catalyst, London
FBKVB, Fonds voor beeldende Kunsten, Amsterdam
FUTURA, Center For Contemporary Art, Prague
Glasgow Sculpture Studios
Gerrit Rietveld Academie, Amsterdam
Haus der Kulturen der Welt, Berlin
Idensitat, Barcelona
Jaaga Creative Common Ground, Bangalore
La Fonca, Fondo Nacional para la Cultura y las Artes, Mexico City
ACAX, Agency for Contemporary Art Exchange, Budapest
Powerline Booking, Berlin
Ruangrupa, Jakarta
Transmediale, Berlin
Undo Foundation Cyprus
Werkleitz Gesellschaft, Halle

At the local level, it works with both institutional and less formally constituted parties, such as neighbourhood initiatives and art projects. Cooperation with a number of the following partners is currently underway.

Partners (Research)

Bauhaus Universität Weimar
Beaconhouse University, Lahore
Humboldt Universität Berlin - Institut für Sozialwissenschaften, Stadt- und Regionalsoziologie
Centre for Independent Social Research, St.Petersburg
Goldsmith College, London
Universität der Künste, Berlin
Srishti School of Art, Design and Technology, Bangalore
Akademie c/o, Akademie der bildenden Künste Nürnberg (Architektur und Stadtforschung)
Royal Institute of Fine Arts, Stockholm
Urban Lab, London
Verlag Buchhandlung Walther König, Köln



The Organization behind ZKU: KUNSTrePUBLIK

The ZKU concept and practice were initiated by the artist collective and non-profit organization KUNSTrePUBLIK. KUNSTrePUBLIK's concepts and projects are equally focussed on local involvement and global exchange. In November 2006, KUNSTrePUBLIK inaugurated the open-air *Skulpturenpark Berlin_Zentrum* on a former "no man's land" that was once part of the Berlin Wall: a 5-hectare unbuilt, city-center lot upon which numerous international artists have since carried out projects. Counter to traditional sculpture parks and public art, *Skulpturenpark Berlin_Zentrum* encourages sculpture as

a process that has the potential to reveal and critique the social, historical and structural contexts provided by the site. In 2008 the Skulpturenpark hosted the *5th Berlin Biennale*, as one of its three main venues.

As part of the 2010 *Werkleitz Festival*, KUNSTrePUBLIK curated an international art in public space project, *Angst in Form*, which was supported by the German Federal Cultural Foundation.

www.skulpturenpark.org
www.kunstrepublik.de

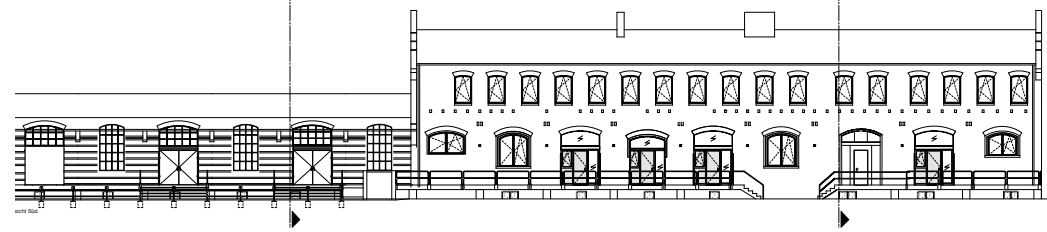
In addition to initiating and curating projects, the members of KUNSTrePUBLIK individually and collectively pursue their own art practices, teach and organize symposia and research projects on socio-political themes and spatial theory.

Coming from non-institutional backgrounds, the founders aspire to continue exploring ways of collaborating, researching and creating that go beyond the lines of existing structures and preconceptions. As part of their artistic practise, KUNSTrePUBLIK considers the development of ZKU a long-term process that will evolve through the contributions and critical feedback expressed by its participants, partners and a diverse audience.



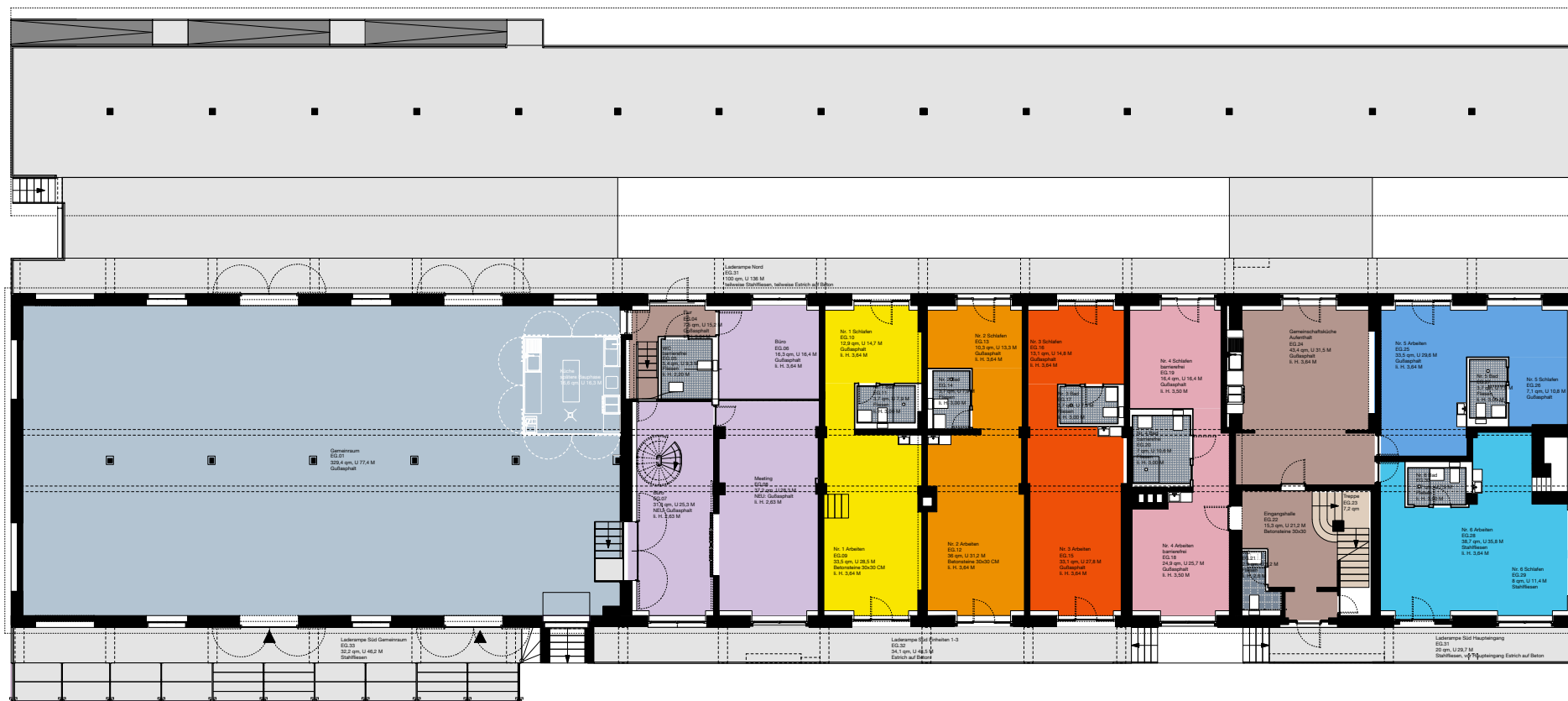
The Venue of ZKU

ZKU is located in one of Berlin's former railway depots, a landmark building with an overall footprint of 2000 sqm. Located in Moabit, a central district of Berlin, the center enjoys easy access to public transport links.



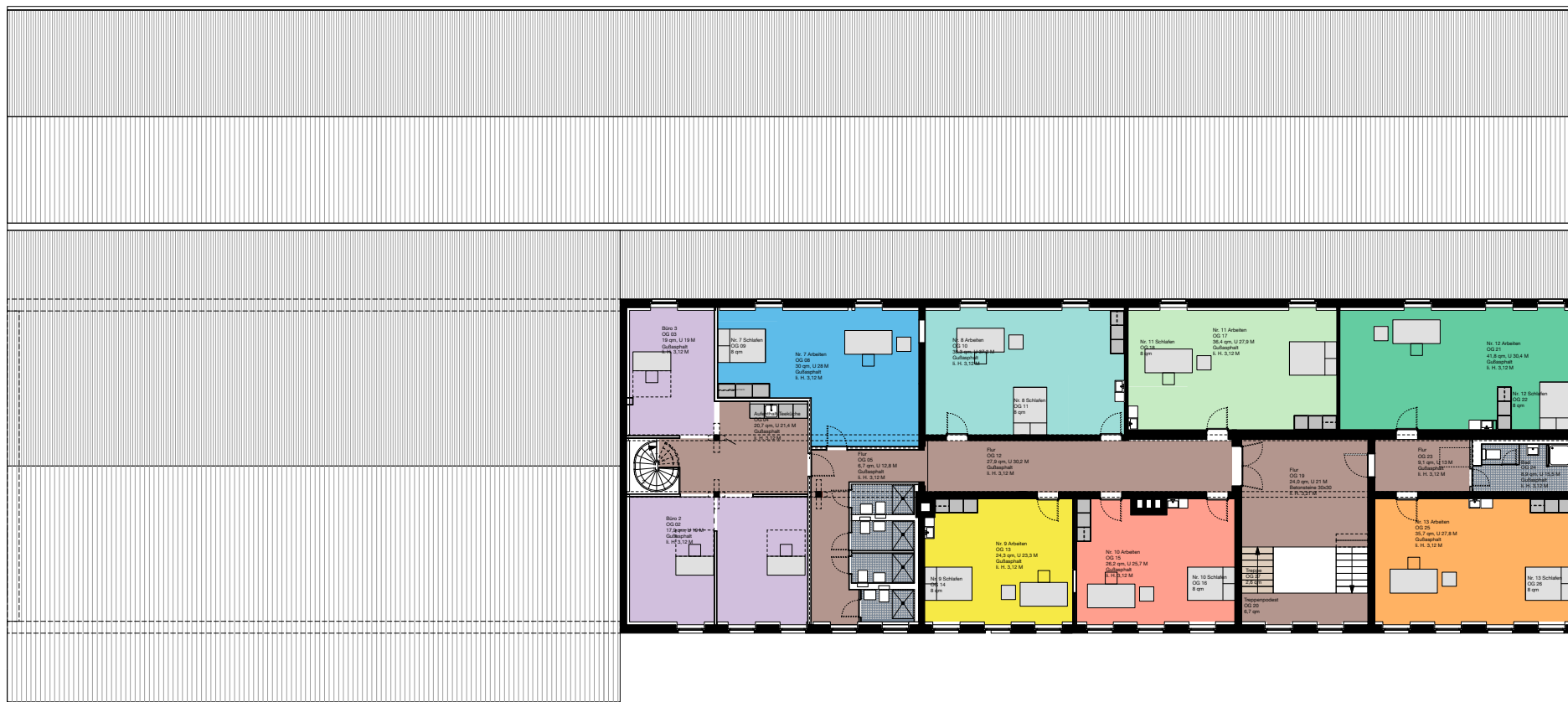
Common Space

Studio Apartments



Ground Floor

Ground floor studio units are accessed directly from the park and the roofed platform as an outdoor working area. All other studio units are accessed via a central stairwell, flanking the communal kitchen that opens with a terrace onto the roofed platform.



Upper Floor

The two-story section of the depot will be completely refurbished by summer of 2012 to accommodate individual artists, practitioners and scholars - or collaborative groups - in 13 self-contained units with living, working and leisure areas for 3–12 month artistic or research residencies (33–110 sqm per unit).



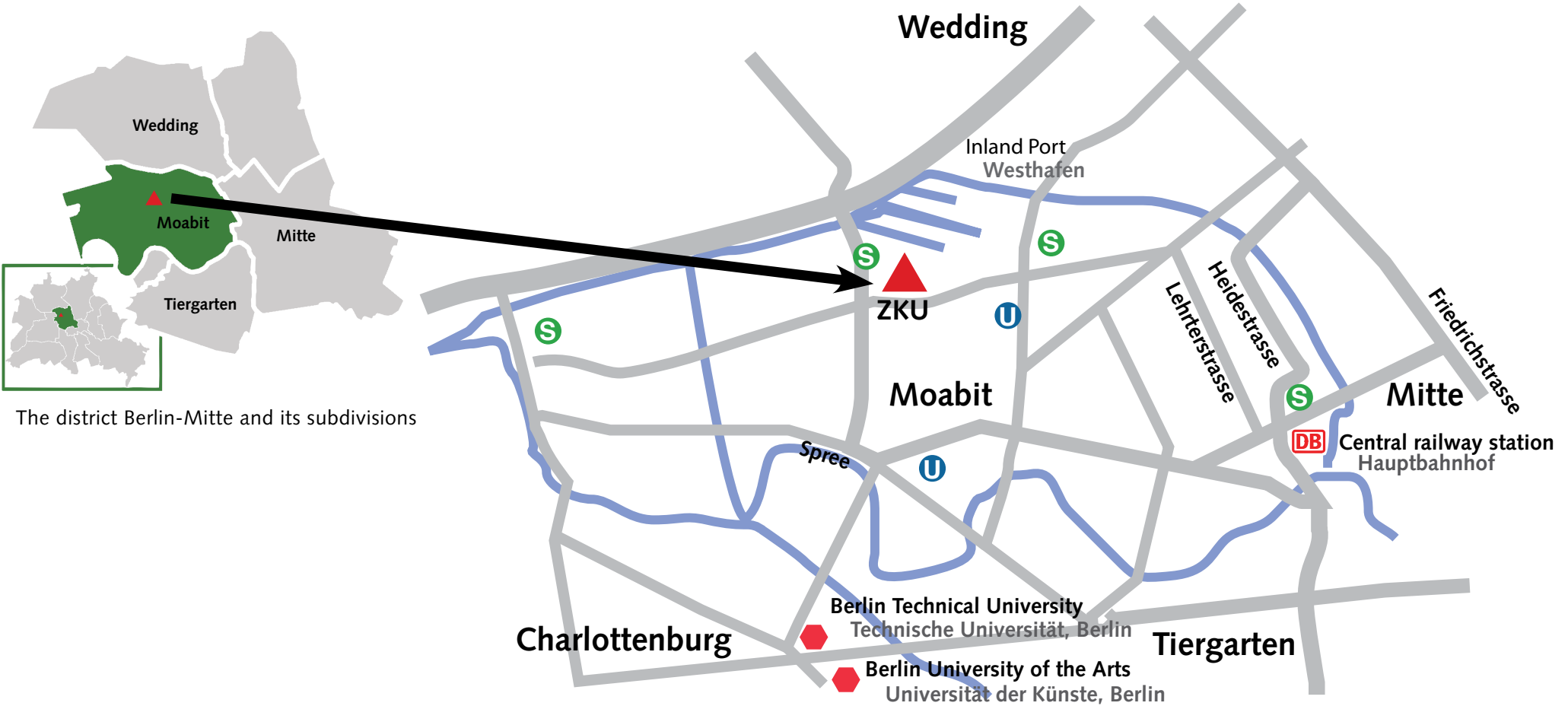
Common Space

Project presentations, exhibitions, public forums and conferences in the adjacent open-plan, single-storey of the depot or in its large vaulted basement—which together comprise the common room - will be organized by both local groups and initiatives and residency



program participants. Catering facilities will enhance the program's social impact, for example by hosting neighborhood "cook-ins" based on Moabit's various culinary cultures.

From the railway depot's roofed platform, one looks out onto the railway tracks of Berlin's Circle Line and Westhafen's main landmark, the Behala Building. The platform is an extra feature to the studio apartments' production and living areas.



ZKU in Berlin

What better place to explore urban issues than a city that has not ceased to be built for the past 150 years? Berlin has witnessed shifting borders at the geographic, political, social and cultural levels. Transitional regimes, the destruction of war, the division and reunification of the city, new legislative frameworks, the shift from heavy industry to the modern, postindustrial era have all shaped Berlin and have kept it in perpetual flux. The city thereby acquired a specific urban character that has generally been marked by a lack of finance and high levels of improvisation. This has often led to unusual

planning processes and a diverse range of informal activity that has resulted in worldwide interest in Berlin as a laboratory for urban issues.

The institutional framework for knowledge production is well established here too: Berlin has 4 universities, 7 colleges, 3 art schools, numerous private institutes and research organizations. The arts and sciences have always been and remain today an important driving force in Berlin. This is reflected by the rich cultural life of the city: Innumerable museums, art galleries, theatres and other cultural institutions next to a diverse range of grass-root activities and a vibrant alternative scene attest to the importance of the arts.

ZKU in Berlin Moabit

Surrounded on all sides by water, Berlin-Moabit was an enclave populated in the 19th century by Huguenots who had fled from France and gave this area its name. With the advent of industrialization at the beginning of the twentieth century, the district became an important manufacturing area. Goods were transported to and from Berlin via this railway depot and Berlin's largest inland port, Westhafen.

ZKU enjoys unobstructed views of this industrial heritage, along with newly planted communal vegetable plots and orchards, and playgrounds for young and old: the results of participatory planning for the park in which ZKU is situated.

The site also enjoys excellent access to public transport links. The Circle Line overland train (S-Westhafen) and the subway (U-Birkenstrasse) can be reached on foot in only a few minutes.

ZKU in a Public Park

View of the city park now under construction
Completion date: Summer 2012
The park expands ZKU's production and exhibition facilities.

HIER FÖRDERN DIE STIFTUNG DEUTSCHE KLASSENLOTTERIE BERLIN, DIE BUNDESREPUBLIK DEUTSCHLAND, DAS JOBCENTER BERLIN MITTE UND DAS LAND BERLIN DAS BAUVORHABEN:

Umbau des ehemaligen Güterbahnhof Moabit zu einem Zentrum für Kunst und Urbanistik

Bauherr:
KUNSTrePUBLIK e.V.
Köpenicker Str. 36/38
10179 Berlin
www.kunstrepublik.de

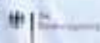
Planung / Bauleitung:
karthard architektur
Bavestr. 5
10997 Berlin
www.karthard.de

Planung Haustechnik:
Ingenieurbüro Weissensee
Streustr. 4
13086 Berlin
www.ig-w.de

Projektmanagement:
AIBM mbH
Boxberger Str. 3
12681 Berlin
www.aibm.de

Ausführende Firma:
BEAG Bauelemente- und
Baugesellschaft mbH
Bailsteiner Str. 51-85, Haus 19
12681 Berlin

STIFTUNG
DEUTSCHE KLASSENLOTTERIE BERLIN



Location

ZKU Zentrum für Kunst und Urbanistik
Siemensstrasse 27-49,
D - 10551 Berlin
www.zku-berlin.org

Postal Address

KUNSTrePUBLIK e.V.
Köpenicker Strasse 36/38
D - 10179 Berlin
www.kunstrepublik.de

Tel.: +49 30 21608325
Fax: +49 30 55164387
zku@kunstrepublik.de

ZKU Founding Directors

Matthias Einhoff, Philip Horst, Harry Sachs

KUNSTrePUBLIK e.V. is a registered German non-profit organization „for the common good“.

While not in receipt of fixed institutional funding, KUNSTrePUBLIK has been funded on a project basis by the European Cultural Fund, the Hauptstadtkulturfonds (Capital City Cultural Fund), the Kunstfonds Foundation, and Bipolar, an initiative of the German Federal Cultural Foundation.